

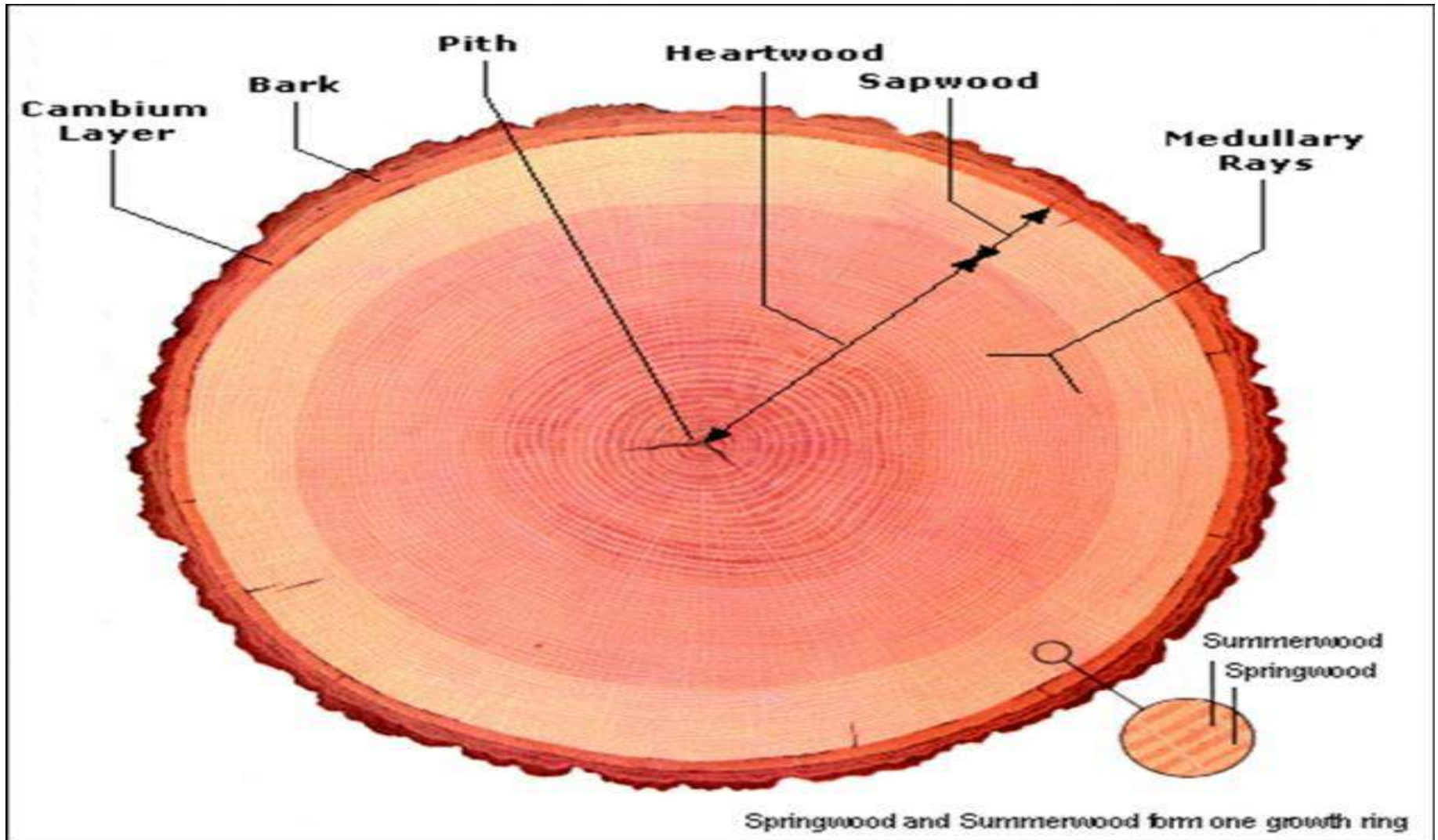
# Timber

## ➤ Definition:

Timber denotes wood which is suitable for building or carpentry and for various engineering and other purposes.



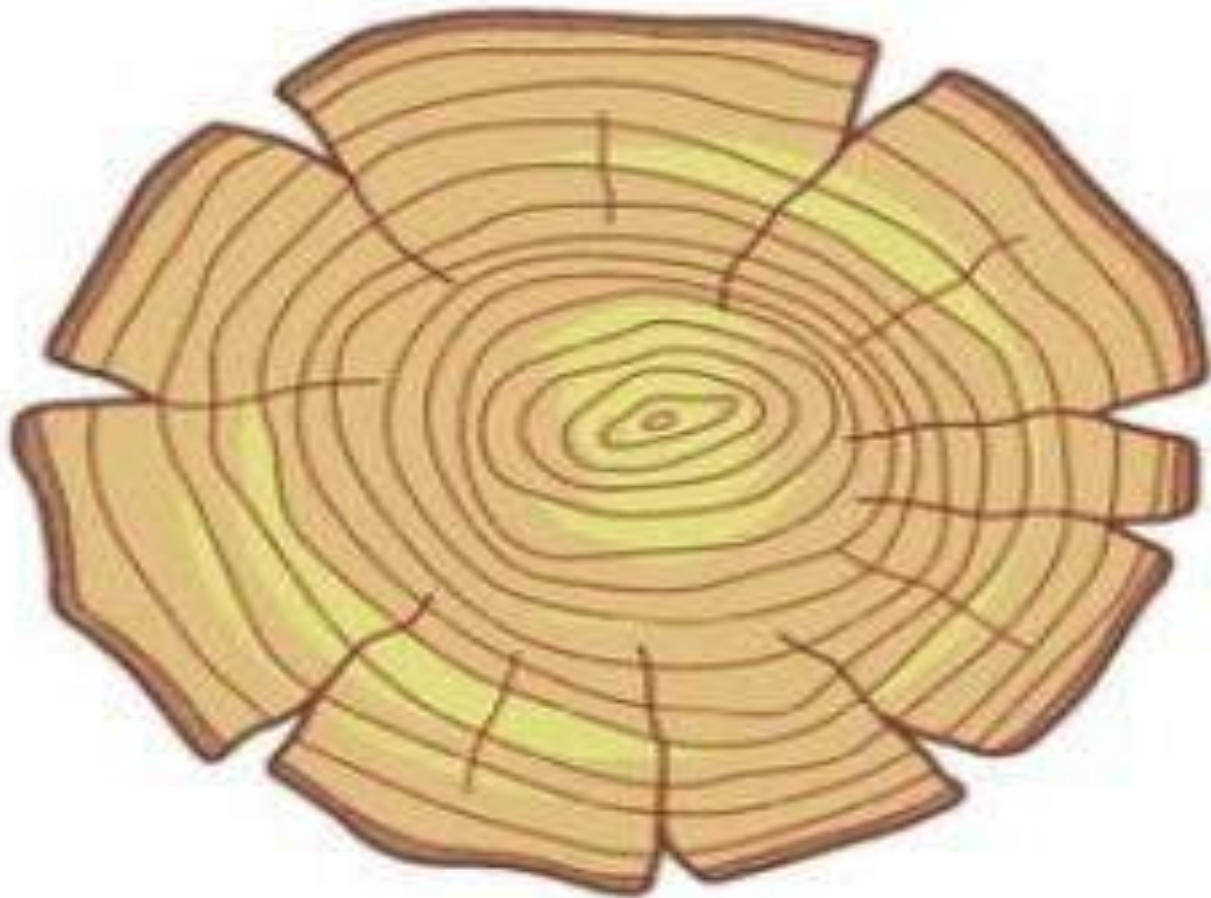
# Components of stem



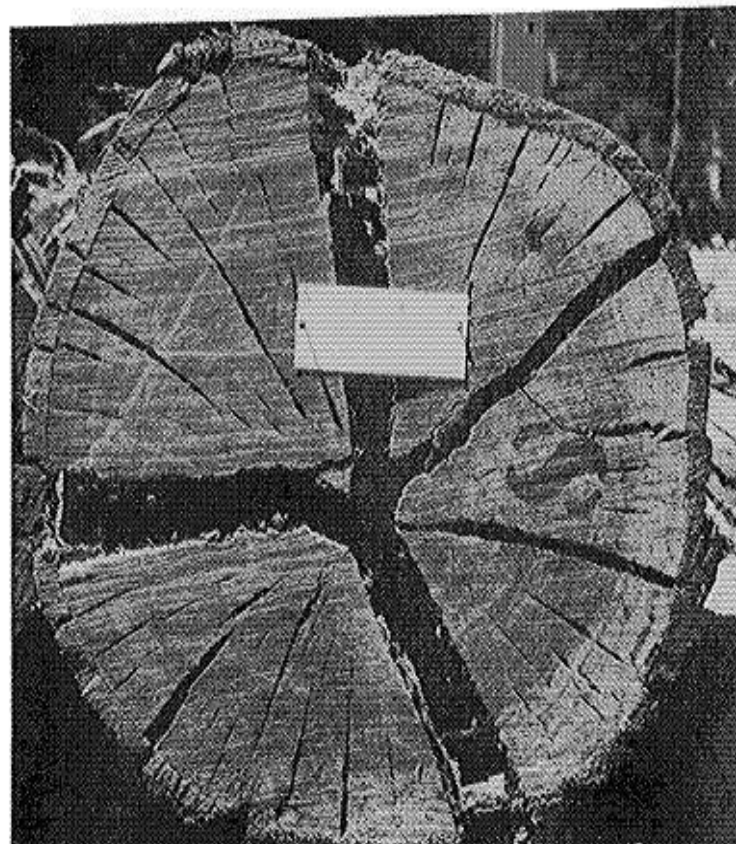
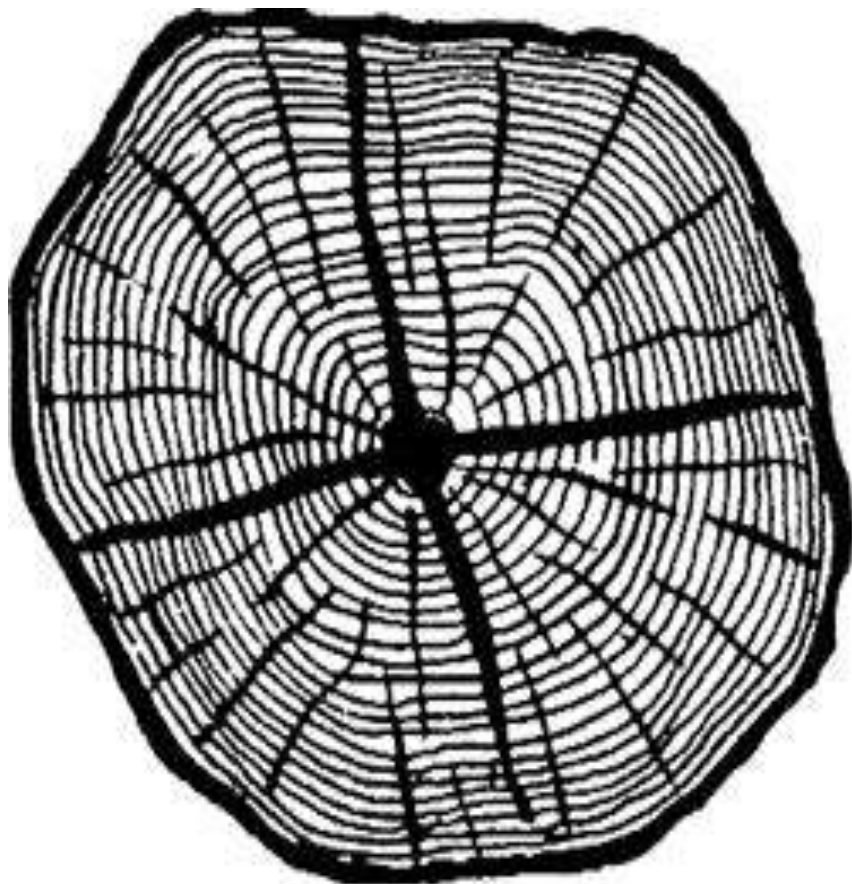
# Defects in Timber

- Shake- The shakes are the cracks and splits developed in in trees .
- Types of Shake-
  1. Star Shake
  2. Heart shake
  3. Cup shake
  4. Ring shake
  5. Radial shake

# Star shake



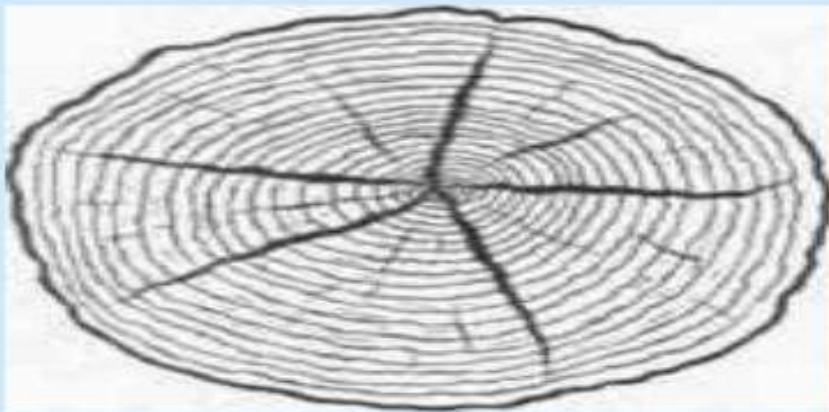
# Heart Shake



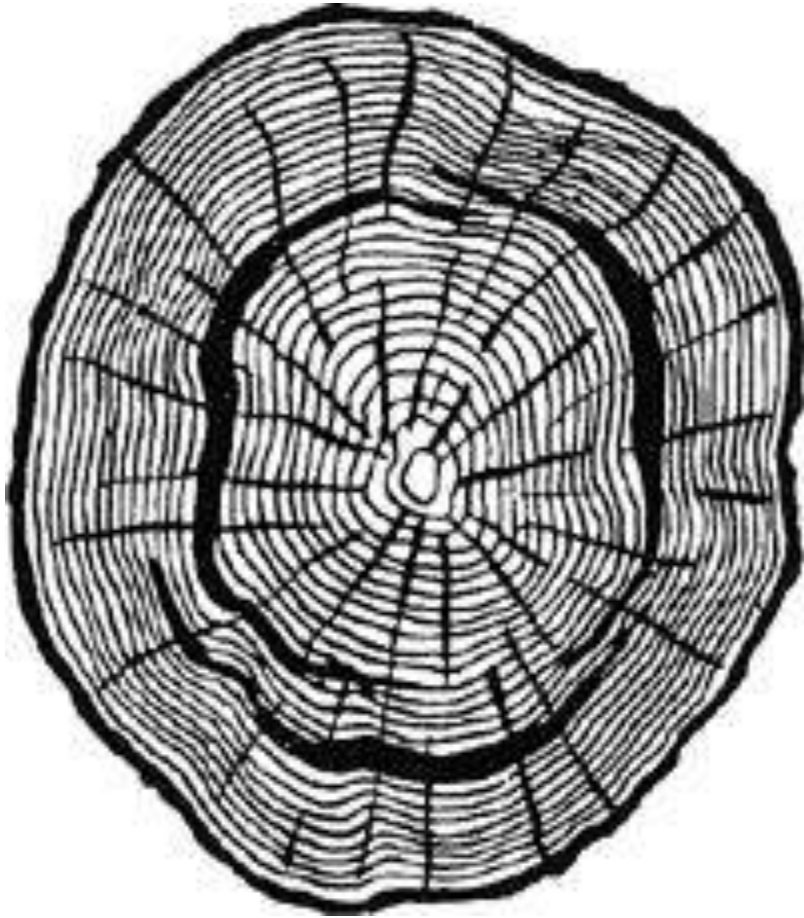
*Photo by U. S. Forest Service.*

# Heart shake

## Heart Shakes



# Cup Shake

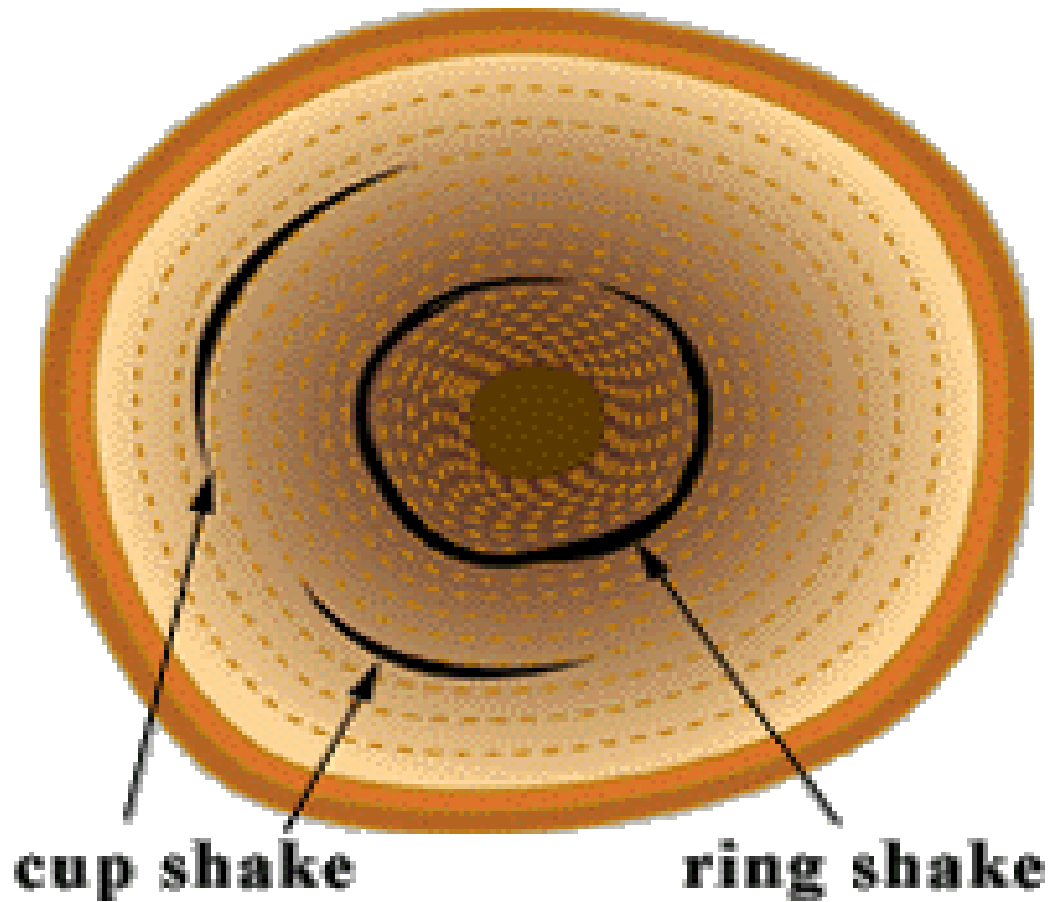


# Cup Shake





# Ring Shake



# Radial Shake

## **(4) Radial Shakes:**

These are similar to the star shakes and occur in felled timber when exposed to the sun during seasoning. Radial shakes are generally irregular, fine and numerous. In this many splits are appeared.



# Radial Shake

